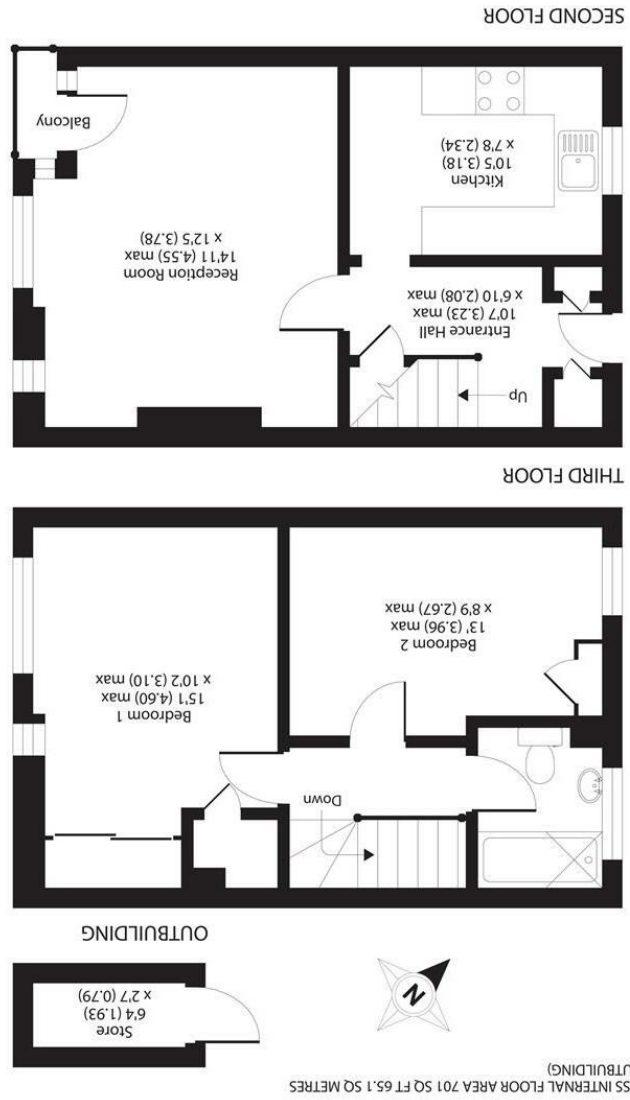
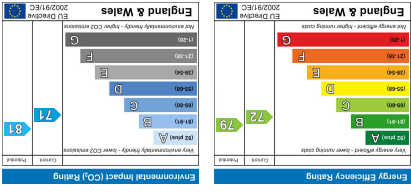


All appliances listed in these details are only 'as seen' and have not been tested by Gibson Lane, nor have we sought certification of warranty or service, unless otherwise stated. Measurements, areas and distances are approximate. Floor plans and photographs are for guidance purposes only and must not be relied upon for any purpose. These details are offered on the understanding that all negotiations are made through this company. Neither these particulars, nor verbal representations, form part of any offer or contract, and their accuracy cannot be guaranteed.



34 Richmond Road  
 Kingston upon Thames  
 Surrey  
 KT2 6ED  
 www.gibsonlane.co.uk  
 Tel: 020 8546 5444





173 Richmond Park Road  
 Kingston Upon Thames KT2 6AG



## Richmond Park Road

Kingston Upon Thames KT2 6AG

£310,000

A well presented two double bedroom split level flat, situated on the second and third floors of this well maintained block in a convenient area of North Kingston.

### Description

A well presented two double bedroom split level flat, situated on the second and third floors of this well maintained block in a convenient area of North Kingston. The internal accommodation comprises modern fitted kitchen, spacious reception room with small balcony, and upstairs are two generous bedrooms and a bathroom. There are spacious communal gardens and the benefit of an additional private storage shed on the ground floor.

### Situation

Richmond Park Road is a sought after residential street ideally situated in the ever popular North Kingston area. The property is conveniently positioned for Kingston station giving direct access into Waterloo and the A3 which serves both London & the M25. Kingston town centre with its array of shops, restaurants and bars is a short distance away. The standard of schooling in the immediate area is excellent within both the private and state sectors.

**Tenure:** Leasehold

**Local Authority:** Kingston Upon Thames

